

# Character Profiler Installation

*\*The author assumes the reader knows how to install mods for World of Warcraft and has already created their account on the guild website, <http://www.endeavor-guild.com>. Make note, your account name on the site and your character name ingame has to match in order for this mod to work.*

What is Character Profiler?

Export character equipment, inventory, bank items, talent, skills and profession information to be imported into a guild website.

How does Character Profiler work?

The how is mostly up to you. Run this addon and it will automatically export character data. But it is up to you to parse that data into your website.

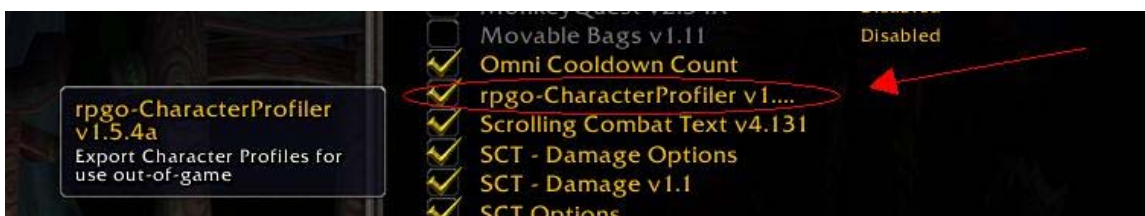
## Installation:

For all intent and purposes here, I will refer to Character Profiler as CP through the course of this installation document.

First off, you will need to download the CP mod from either the Endeavor site or from the curse-gaming.com site. In order to achieve compliance and compatibility for troubleshooting purposes, I advise you to download the mod from the Endeavor site.

Goto <http://www.endeavor-guild.com> and navigate down the right menu to the “Download & Links” section. Click on the “Download” link below the previous mentioned section and in the main body of the page, a new page will load and you will to click on the “Guild Roster Software” link. The very first mod is the CP mod you will need to download. Please download and install this mod under your “addons” directory.

To verify installation was successful, please start and log into your World of Warcraft account and look for the “rpgo-CharacterProfiler” mod and make sure it is checked as like in the picture below.



## Extracting Your Data:

After you have verified that the mod has been installed successfully, you are now ready to log into the game and to extract your characters information.

Once in the game, please open up your Character window. You will notice to the upper right side of your characters image, there is a red button that is labeled “save”. Notice the buttons location below.



Upon locating the “save” button, click it. You will notice a lot of white text in your chat window. Certain lines will have red text in them, don’t be discouraged by this. If you read the lines with the red text, they will inform you that you will need to open up several windows like your profession window, spell book window, etc..

After you have opened up all these windows, go back to the Character window and click on the “save” button once more. You will now have an output that is ready to be uploaded to the guild website.

## Uploading Your CP Data:

You can either stay ingame or exit the game completely to finish this last step.

Open up your browser and go to <http://www.endeavor-guild.com>. If you are not logged into the site, please do so now. At the top of the main page, below the banner, you will see a link for the “Guild Roster”. Click on this link.

At the top of the page, you will notice a variety of buttons in 3 different columns, please select “Update Profile” from the top of the right column.



The following page will have the same menu as pictured above on the screen but you will notice below it, a new body of text and images. Navigate to the section below the menu that is pictured above, “Update (update.php)”. You will need to now browse to the characterprofiler.lua on your local machine. This file contains all the extracted data about your World of Warcraft character.

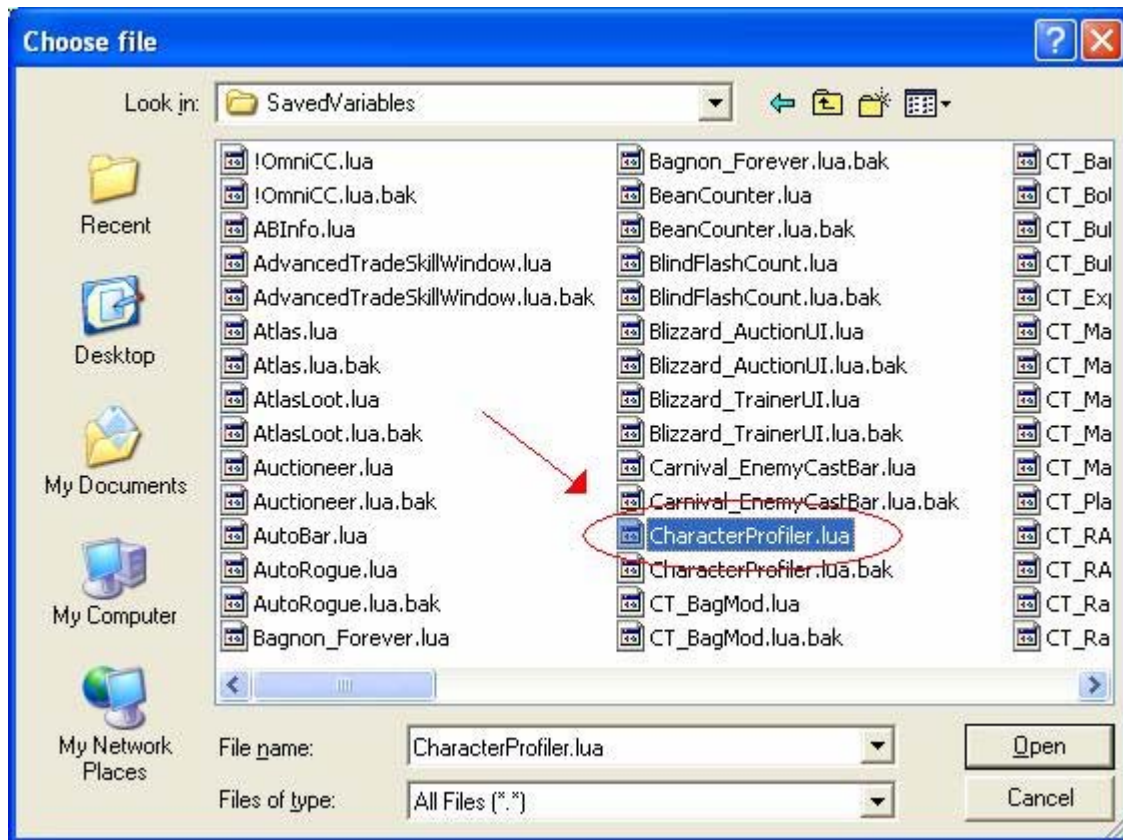
Click on the “Browse” button that is to the right of the empty field for CharacterProfiler.lua.



This will open up a new window for you to choose the correct file to upload. Assuming you know your way around your local system. Navigate to the following path.

**.\Program Files\WorldofWarcraft\WTF\Account\*your account name\*\SavedVariables**

Once in this folder, you will need to locate and select the “CharacterProfiler.lua” file and then click on “Open”



This will bring you back to the website with the empty field now populated with the path that the “CharacterProfiler.lua” is located. All that is left to do now is to click on the “Upload” button and your information will now appear on the Guild Roster site and your name will now be an active link for you and others to view your character details.



That's it!

You should have now successfully installed, extracted and uploaded your CP data to the guild website. If you have any problems with the installation you can leave a post in the general portion of the forums.